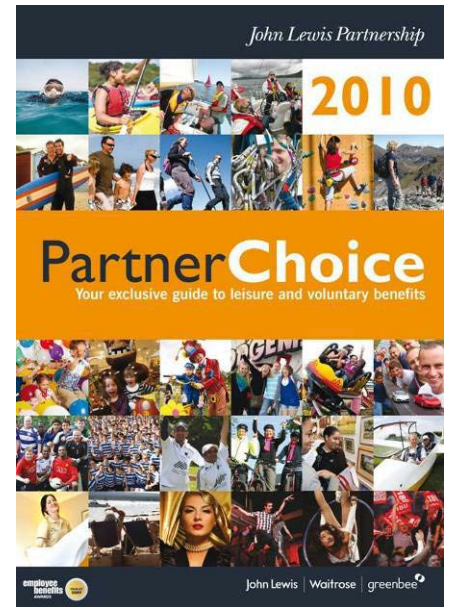
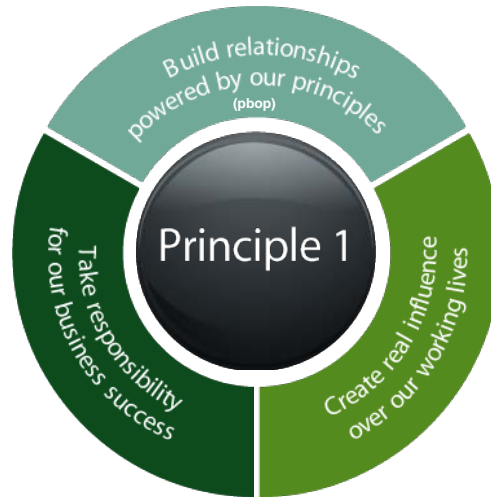


Accessible Retail Conference

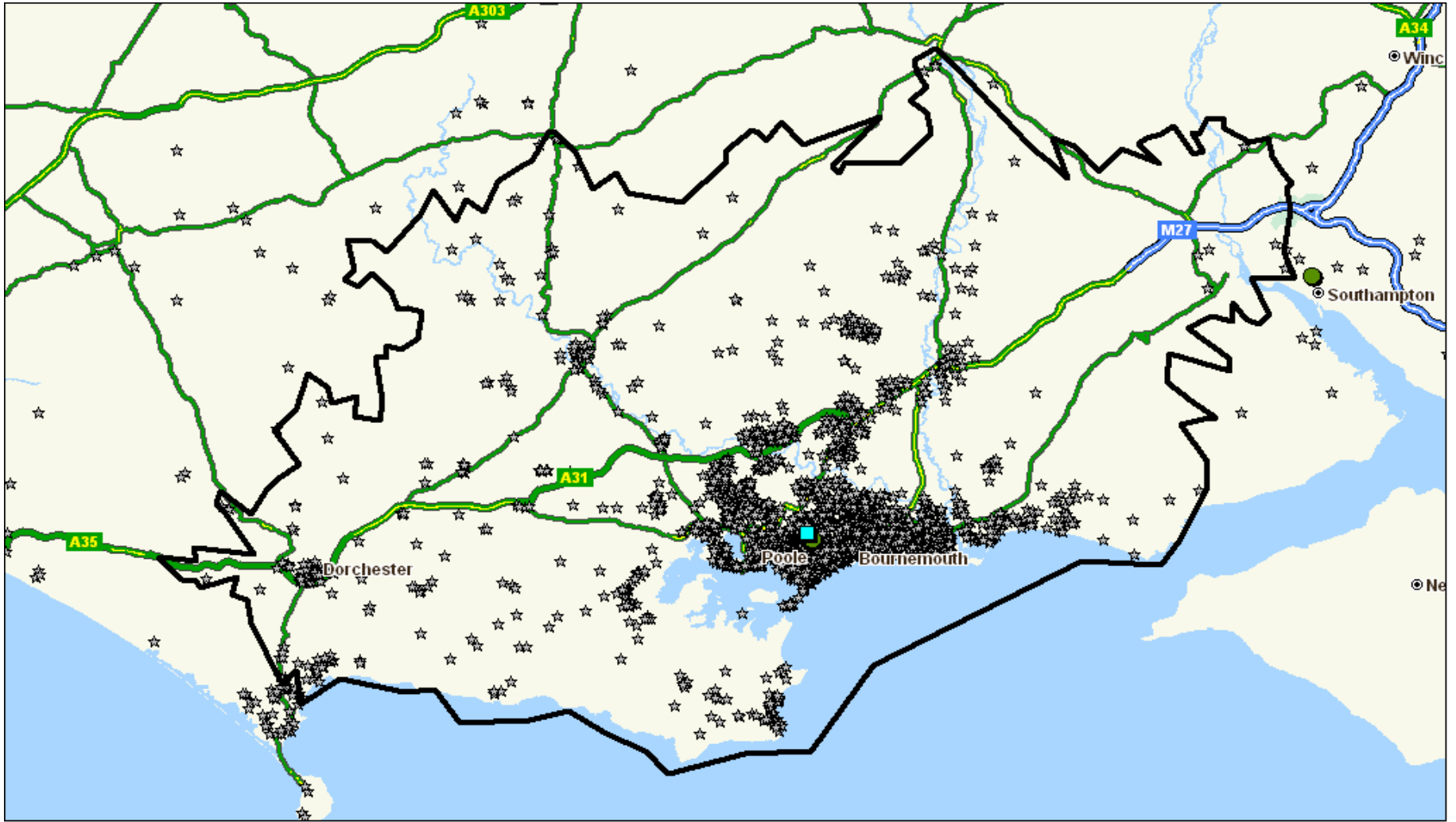
7th October 2010













"It is the best department store in this country. It is local and easy to get to and easy to park."

"It is local to me."

"It's nice and open. Easy access. Close to home. Good car parking."

"I am no longer forced to drive to Southampton or Bristol. I can purchase even the smaller items with confidence."

"It is a good environment with good parking and ease of access."

"It's easy because there are John Lewis' everywhere so it's handy."

"Quality. Helpful staff. Obviously location is important. It's convenient."

"Locality." Solution Demander,

"Excellent, much needed store other than a trip to Southampton with car parking and fuel charges. Thank you for coming to Poole"

"Plenty of room. It's air conditioned and there's parking and buses."

"Good first impressions – easy parking, clearly marked bays."

"It is the closest to where I live and it is good quality."

"When they announced they were building a John Lewis store 5 minutes from my office I was pleased. It is still the same brand name and the staff are still lovely. It's home from home."





